



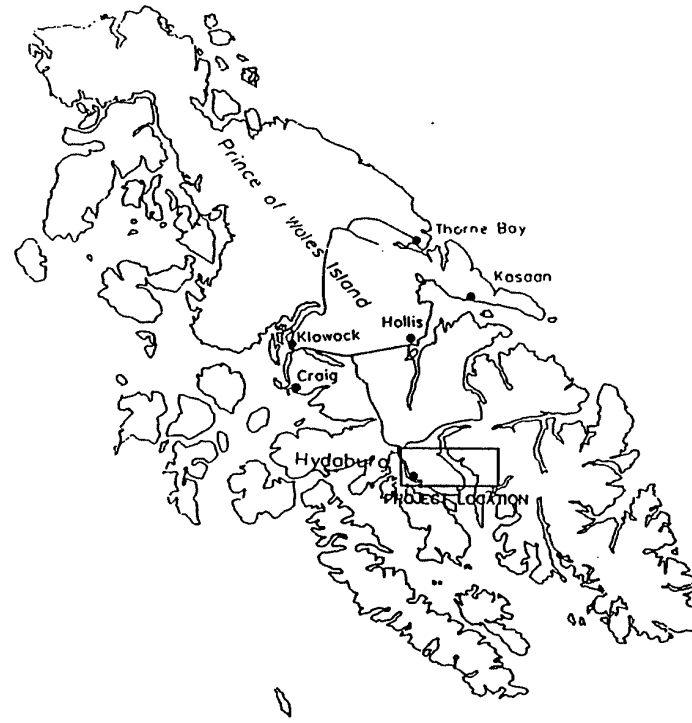
Haida Energy, Inc. Presentation

*Reynolds Creek Hydroelectric Project
Corry Hildenbrand – Project Manager
Hildenbrand Associates LLC*

PROJECT LOCATION



LOCATION MAP



VICINITY MAP

Location: Prince of Wales Island, Alaska

Waterbody: Lake Mellen (Rich's Pond) and Reynolds Creek; Hetta Inlet

Project Features

DAM: A 20-foot-long, 6-foot-high, concrete diversion dam, with an uncontrolled spillway, near the outlet of Rich's Pond at elevation 870 feet mean sea level .

INTAKE: A small concrete box-type intake structure with fish racks located on the left side of the diversion dam;

PENSTOCK: A 42-inch-diameter, 3,200-foot-long, steel penstock;

POWERHOUSE: A 40-foot-wide, 100-foot-long, pre-engineering insulated metal powerhouse on a concrete slab containing one generating units with a total installed capacity of 5 MW;

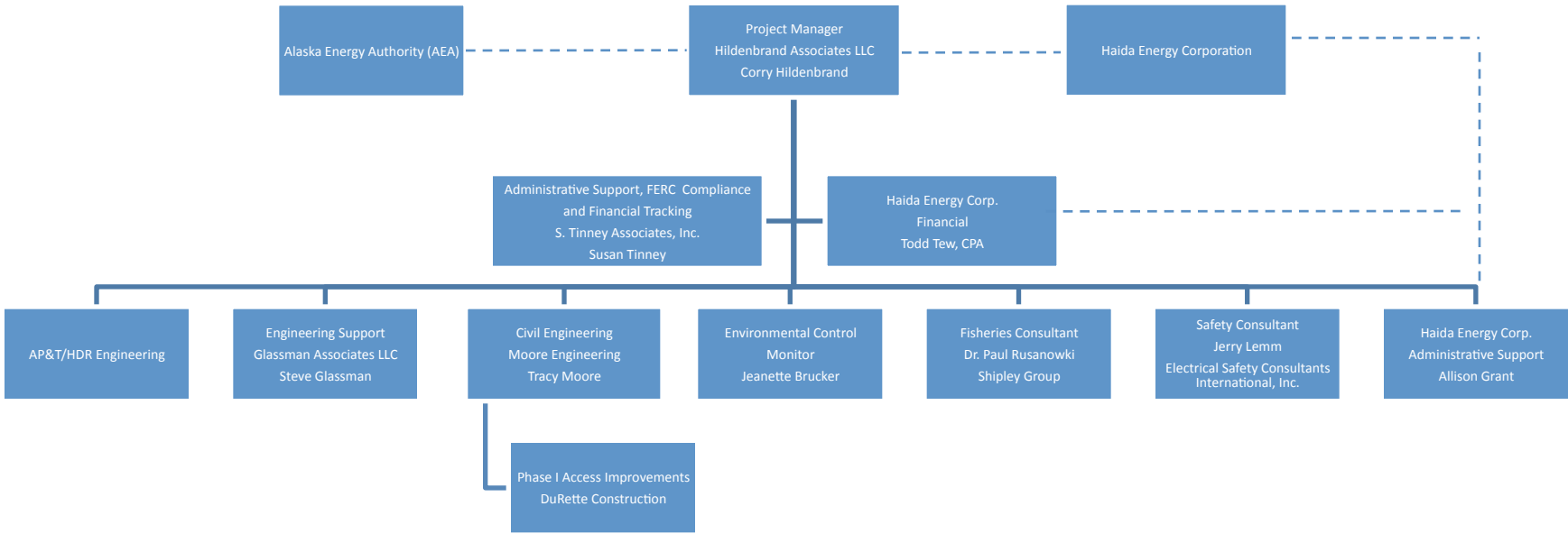
TAILRACE: An 80-foot-long tailrace channel consisting discharging into Reynolds Creek;

SWITCHYARD/SUBSTATION: A switchyard/substation, located next to the powerhouse.

TRANSMISSION LINE: An overhead 34.5 kV, 12-mile-long transmission line inter connecting to POW Transmission line;

Project Team (to date)

Phase 1 Construction



Aerial View of Rich's Pond and Lake Mellen



Rich's Pond



Approximate Dam Site



Copper Harbor Marine Access Area



Flagging where Penstock goes through lower clear-cut



Flagging where penstock goes uphill

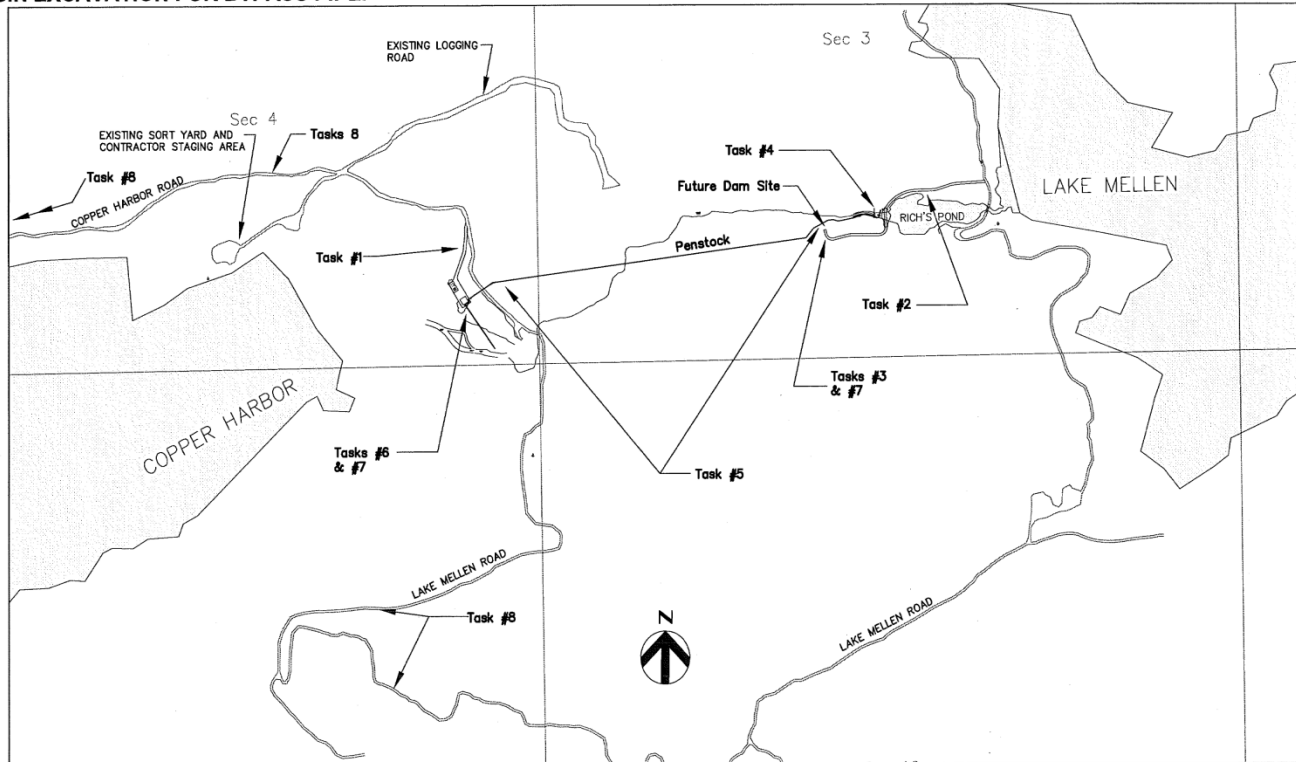


Powerhouse Site



PHASE 1 WORK PLAN

1. CONSTRUCT POWER HOUSE ACCESS ROAD .
2. CONSTRUCT DAM ACCESS ROAD AND TEST PITS.
3. CONSTRUCT PIONEER ROAD HIGHLINE SETUP AND VALVE VAULT ACCESS.
4. BEGIN EXCAVATION FOR BYPASS PIPE.
5. CLEARING FOR PENSTOCK
6. POWERHOUSE CLEARING AND TEST PITS.
7. REYNOLDS CREEK XING.
8. REPAIR EXISTING ROCK SLIDES ON ACCESS ROADS.



G:\Users\Reynolds Creek\Hydro\Reynolds Creek\Hydro-000-DTA_CDP-52-gim.dwg

MOORE ENGINEERING, INC.
 P.O. BOX 397 CRAIG, ALASKA 99921 (907) 530-7008
TRACY MOORE, P.E. REGISTERED PROFESSIONAL CIVIL ENGINEER

REVISIONS:	

REYNOLDS CREEK
 HYDROELECTRIC PROJECT
 PHASE 1 CONSTRUCTION ACCESS
 FERC # 11480

DRAWN/CHECKED	GDM/T.M.
REVISION	

DATE	JUNE 2011
SHEET	2 OF 28



6-20-11

Phase I Access Improvements

- Contract Awarded to: DuRette Construction
- Schedule:
 - 9/6/11: Contract Award Letter
 - 9/20/11: Materials and Equipment arrive in Thorne Bay
 - 9/24/11: Proposed barge date into Copper Harbor
 - 9/26/11: Set up Fuel Containment area at Copper Harbor; set up area for Explosives Product Magazines; set up Erosion/Control measures
 - 10/1/11: Begin Project work – NTP issued
- 11 Weeks to perform on site – Weather dependent.
- December 31, 2011 - All Phase I work to be completed